

LIONTRUST

GLOBAL DIVIDEND FUND

KEY INVESTOR
INFORMATION
DOCUMENT

This document provides you with key investor information about this Fund. It is not marketing material. The information is required by law to help you understand the nature and the risks of investing in this Fund. You are advised to read it so you can make an informed decision about whether to invest.

Liontrust Global Dividend Fund is a sub-fund of the Liontrust Investment Funds I and categorised as a UCITS scheme. This document is based upon the C GBP Accumulating share class (ISIN: GB00B9225P64), which is the representative class for all other classes.

Objective

- The Investment objective of the Liontrust Global Dividend Fund is to generate income with the potential for long term (5 years or more) capital growth.
- Income Target Benchmark: The Fund aims to deliver a net target yield of at least the net yield of the MSCI World Index each year.

Policy

- The Fund is considered to be actively managed in reference to the benchmark(s) in the performance table by virtue of the fact that it uses the benchmark(s) for performance comparison purposes. The benchmark(s) are not used to define the portfolio composition of the Fund and the Fund may be wholly invested in securities which are not constituents of the benchmark.
- The Fund invests at least 80% in companies across the world. The Fund may also invest up to 20% in other eligible asset classes as detailed within the prospectus.
- Any income the Fund generates will be reinvested to grow the value of your investment.

Recommendation

- This Fund may not be appropriate for investors who plan to withdraw their money within 5 years.

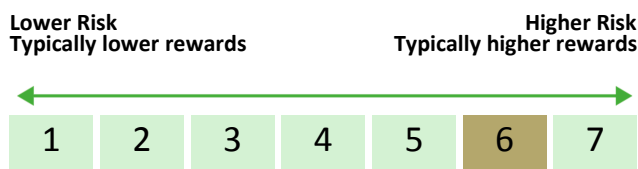
How to buy

- You may buy or sell shares on a daily basis (but not weekends or Bank Holidays). Orders must be received by 11:59am for execution at 12:00 midday valuation point on the same day. Further details can be found at www.liontrust.co.uk.

Investment process

- The fund managers believe the key to generating long-term outperformance is through high conviction, long-term, research-led company selection. When combined with the portfolio construction, this approach can drive returns that are largely uncorrelated to the successes and failures of popular investment styles such as growth (investing in growing companies) and value (holding relatively cheap companies).
- The investment process is designed to identify Global Leaders, which are companies with a sustainable economic moat, are able to reinvest back into their businesses at attractive returns and can generate enough cash to return a good portion to shareholders.
- There are three key elements to the investment process: collaborative idea generation, a culture of conviction and a three silo approach to portfolio construction.
- Collaborative idea generation: each member of the Liontrust Global Equity team has a research responsibility covering an industry sector of the global economy, a particular economic trend or a theme such as industries adopting new technology and changing consumer tastes. This clear division of responsibility ensures that the fund managers do not overlook "unfavoured" companies and allow structured peer challenge for the generation of validated, independent and sometimes atypical investment ideas that underpin the collaborative original research required.
- A culture of conviction: to enable ideas to drive investment returns rather than providing market returns, each one must be given sufficient weight in the portfolio and time to work. This results in concentrated portfolios with long holding periods.
- Three silo portfolio construction: portfolios are constructed to be "style-free" with the aim of providing more consistent returns over the economic cycle by ensuring that ideas drive returns rather than style bias.
- The investment process is implemented through four stages: idea generation, stock selection, portfolio construction, and monitoring and exiting.

Risk and reward profile



- This Synthetic Risk and Reward Indicator (SRRI) is based on historical data and may not be relied upon to gauge the future risk profile of the Fund.
- The SRRI shown is not guaranteed to remain the same and may shift over time.
- The lowest category (1) does not mean 'risk free'.
- The Fund's risk and reward category has been calculated using the methodology set by the European Commission. It is based upon the rate by which the Fund or a representative fund or index's value has moved up and down in the past.
- The Fund is categorised 6 primarily for its exposure to global companies.
- The SRRI may not fully take into account the following risks:
 - that a company may fail thus reducing its value within the Fund;
 - any company which has high overseas earnings may carry a higher currency risk;
 - any overseas investments may carry a higher currency risk. They are valued by reference to their local currency which may move up or down when compared to the currency of the Fund.
- This Fund may have a concentrated portfolio, i.e. hold a limited number of investments. If one of these investments falls in value this can have a greater impact on the Fund's value than if it held a larger number of investments.
- Counterparty risk: any derivative contract, including FX hedging, may be at risk if the counterparty fails.
- The Fund may, under certain circumstances, make use of derivative instruments but it is not intended that their use will materially affect volatility.
- The level of income is not guaranteed.
- For full details of the Fund's risks, please see the prospectus which may be obtained from Liontrust (address overleaf) or online at www.liontrust.co.uk.

LIONTRUST

GLOBAL DIVIDEND FUND

Charges for this fund

- The charges you pay are used to pay the costs of running the Fund, including the costs of marketing and distributing it. These charges reduce the potential growth of your investment.

One-off charges taken before or after you invest

Entry charge	None
Exit charge	None

- This is the maximum that might be taken out of your money before it is invested.

Charges taken from the Fund over the year

Ongoing charges	Classes C Acc GBP, C Inc GBP: 0.91%
	Classes M Acc GBP, M Inc GBP: 0.66%

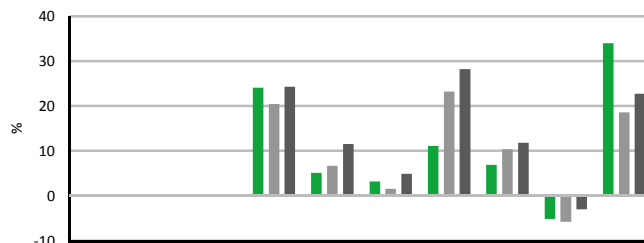
Charges taken from the Fund under certain specific circumstances

Performance fee	None
-----------------	------

- The entry and exit charges** shown are maximum figures. In some cases you might pay less – you can find this out from your financial adviser or fund platform if you are not using a financial adviser.
- The ongoing charges** figure is based on expenses as at 30 June 2020. This figure may vary from year to year. It excludes:
 - portfolio transaction costs, except in the case of an entry/exit charge paid by the UCITS when buying or selling units/shares in another collective investment undertaking.
- For more information about charges, please see the Charges and Expenses section of the Fund's prospectus, which is available electronically at www.liontrust.co.uk.

Past performance

- Past performance is not a guide to future performance. It has been calculated on the basis that any distributable income of the Fund has been reinvested. The past performance shown in the chart takes into account all charges except entry and exit charges.
- The Fund launched on 20 December 2012.
- The C Acc share class was launched on 20 December 2012.
- The base currency of the Fund is pounds sterling.



	2010	2011	2012	2013	2014	2015	2016	2017	2018	2019
■ Liontrust Global Dividend C Acc GBP				24.1	5.1	3.2	11.1	6.9	-5.2	34.0
■ IA Global Equity Income				20.4	6.7	1.5	23.2	10.4	-5.8	18.6
■ MSCI World				24.3	11.5	4.9	28.2	11.8	-3.0	22.7

Practical information

Authorisation	This Fund is authorised in the UK and regulated by the Financial Conduct Authority.
Depository	Bank of New York Mellon (International) Ltd.
Investment adviser	Liontrust Investment Partners LLP.
Further information	Copies of the prospectus and the latest annual and half-yearly reports, which are the primary source of additional information, are available, without charge, from Liontrust Fund Partners LLP, 2 Savoy Court, London, WC2R, 0EZ. They are also available electronically at www.liontrust.co.uk .
Taxation	UK tax legislation may have an impact upon your own personal tax position.
Fund prices and other information	The Fund's last published price is available from Liontrust Fund Partners LLP at www.liontrust.co.uk or by writing to us at 2 Savoy Court, London, WC2R 0EZ, or by telephoning 020 7412 1777 during business hours (9.00am - 5.30pm). The C GBP Acc Class is the representative share class for all classes, which are available as described in the prospectus.
Remuneration	Information on the current remuneration policy of the Fund, including a description of how remuneration and benefits are calculated and the identity of persons responsible for awarding the remuneration and benefits, is available at www.liontrust.co.uk . A paper copy of this information is available free of charge upon request from Liontrust Fund Partners LLP at 2 Savoy Court, London, WC2R 0EZ.